

Table of contents

Contact information	2
Venue	3
Description	
Dimensions	
Accès	
Stage	4
Rigging	
Accessories	
Instruments	
Lighting	5
Console, equipment, miscellaneous	
Dimmers, interconnections	
Multimedia	
Audio	6
Console, effects, house system, monitors	
Microphones, cables	
Miscellaneous	
Dressing rooms, power distribution	
Interconnections, Stage crew, Parking	7
Lighting Plan	8
Stage dimension	9

*** Diagrams, plans, picture, etc. upon request.

Contact information

Palais Montcalm – Maison de la Musique
995 Place d'Youville
Quebec City, Quebec G1R 3P1
Telephone: (418) 641-6220
Fax: (418) 691-5171
www.palaismontcalm.ca

Technical services

Philippe Poulin
Head of technical services
Telephone: (418) 641-6220 ext. 2530
philippe.poulin@palaismontcalm.ca

Barbara Poulin
Assistant Head of technical services
Telephone: (418) 641-6220 ext. 2530
barbara.poulin@palaismontcalm.ca

Rental and customer service

Simon Gagnon
Rental services director
Telephone: (418) 641-6220 ext. 2606
simon.gagnon@palaismontcalm.ca

Box office

Telephone: (418) 641-6040
Toll free: (877) 641-6040

Reception manager	(418) 641-6220 ext. 2620
Orchestra dressing rooms	(418) 641-6220 ext. 2650
Salle D'Youville dressing rooms	(418) 641-6220 ext. 2653

Venue

Description

Palais Montcalm's Salle D'Youville is a completely modular multi-purpose facility that doubles as a rehearsal and performance space for up-and-coming performers, emerging music and smaller ensembles (jazz, blues and contemporary styles). It also serves as a reception area and a conference space. The impressive window design is complemented by wooden shutters and adjustable curtains providing total darkness capability for image projection and acoustic tuning.

The floor is made of cherry wood and the seats are removable.



©Benoit Lafrance

Pipes hung on the ceiling allow light weight rigging.

Overall dimensions :

Length 13,10 m (43')

Width 11,88 m (39')

Height 5,4 m (17'8'')

Capacity :

120 people sitting (Cabaret)

150 people sitting (Theatre)

175 people standing

Access

The Salle D'Youville is located on the second floor of the Palais Montcalm.

Access is made by the main entrance of the building. There is no dock.

Elevator :

An elevator allows access from the main entrance

Width 2 m (6'), Length 1,3 m (11'8''), Height 2,2m (7'6'').

Doors are :

Width 1,06 m (6'2''), Height 2,15m (7'4'').

PALAIS M()NTCALM

TECHNICAL INFORMATION

SALLE D'YOUVILLE

Stage

Stage

The scene is located in the northeast corner of the room and is 5,18 m (17') wide by 4,87 m (16') long. It is 40 cm (16'') high.

Rigging

Pipes are permanently installed in the ceiling. The maximum load of those pipes is 34 kg (75lb) each 30 cm (1 foot) with an overall load of de 900 kg (2000 lb) with a single point maximum load of 90 kg (200 lb). Pipes height is 4,95 m (16'3'').

Accessories

Risers (upon request) :

- Risers (Plato brand) are adjustable in height by multiples of 0,2m (8'')
- 6 risers of 1,2m x 1,2m (4'x4')

Lecterns :

- Wenger lecterns.
- 17 single

Chairs

- 150 chairs 470 mm (18,5'')
- 150 chairs 350 mm (13 ¾'')

Curtains

- 4 self support curtains of 2,1m x 3m (7'x10') upon request

Instruments

A piano Steinway can be placed or not on the stage

- 1 Steinway 394802D (1956), Standard tuning **LA-442**

Lighting

Console

Grand MA2 onPC with Command Wing and touch screen

Equipment

- 11 Lekos Robert Juliat 614S, 13° to 42°
- 14 Fresnels Altman 1000W (upon request)
- 5 Projectors LED, model LTI Colorblast
- 20 Projecteur LED Chauvet Colorado Tour 1 (upon request)
- 8 Moving Light, Genio SGM

Miscellaneous

- Set of standard Rosco and Lee Filter gels
- Gobo holders and Iris for each Leko
- Barn doors for Fresnels

Dimmers

24 Dimmers 2.4 kW located in the technical room stage left.

Controls and interconnections

DMX connections are in the back of the room on the stage left side.

Power

All of the power outlets from the dimmers are in Twist Lock 20A (Nema L5-20R).

Multimedia

Projector and Screens (upon request)

- Projector NEC NP4100W 5500 lumens (User fees)
- Screen Cinefold, matt white surface : 2,01m x 3,56m (79'' x 140'')
- Screen Cinefold, matt white surface : 2,29m x 3,05m (90'' x 120'')
- Video Switcher Kramer VP-728 (User fees)
- Cable and adapter kit

PALAIS M()NTCALM

TECHNICAL INFORMATION

SALLE D'YOUVILLE

Audio

Console

- Yamaha LS9 / 32 inputs
- Yamaha M7CL / 48 inputs (upon request)

Effects, Processors

- 1 EQ KlarkTeknik DN360
- 1 CD player Denon DN-C635
- 1 Player/Recorder CD/Compact Flash Tascam SS-CDR1
- 1 T.C.Electronic M-One XL
- 1 bss Soundweb 3088

PA System

- 2 Kling & Freitag CA1201-M
- 2 Kling & Freitag CA 106
- 2 Kling & Freitag SW118i

Monitors

- 4 Passive monitors Kling & Freitag CA1201-M
- 4 amplification channels CROWN 1400CSL

Microphones

4	AKG	SE300	2	Shure	SM57
3	Sennheiser	e604	4	Shure	SM58
1	Shure	Beta 52a	4	Radial	JDI (boîte directe)

Wireless microphones

- 1 Shure wireless systems SLX with 1 handheld SLX2 microphones SM-58 or 1 belt-pack SLX1
- 3 Shure wireless systems ULX with 3 handheld microphones SM-58 or 3 belt-pack ULX1 (Systeme upon request)

Microphones stands (K&M brand)

- 2 Round base
- 6 Tall stands
- 6 Small stands

Cables

- 1 24 pairs from stage right to the back of the room (Mass connector)
- 1 24 pairs Patch box XLR
- 50 Câbles XLR

Miscellaneous

Dressing rooms

Salle D'Youville

Located close to the stage on the third floor, that dressing room is equipped with showers, toilets, mirrors.

Orchestra loges (upon request)

Located at the 300 level, the orchestra loges are divided into 3 sections: one individual loge and two loges each accommodating 20 people. They are equipped with showers, toilets, mirrors, program sound and bulletin boards. There is also a large common area.

Power distribution

There is an electrical panel with female Cam type outlet.
200A 120/208V 3Ø. Located in the technical room.

AV Interconnection

An interconnection network with XLR, intercom, DMX, CAT5e, BNC-RGBHV is available at various points throughout the building. Access to these connections is located at the Raoul-Jobin's technical backstage right (patch bay).

Stage crew

The Salle D'Youville (technicians, wardrobe and projectionists) operates within the jurisdiction of the International Alliance of Theatrical Stage Employees & Moving Picture Technicians, Artists and Allied Crafts (I.A.T.S.E. Local 523).

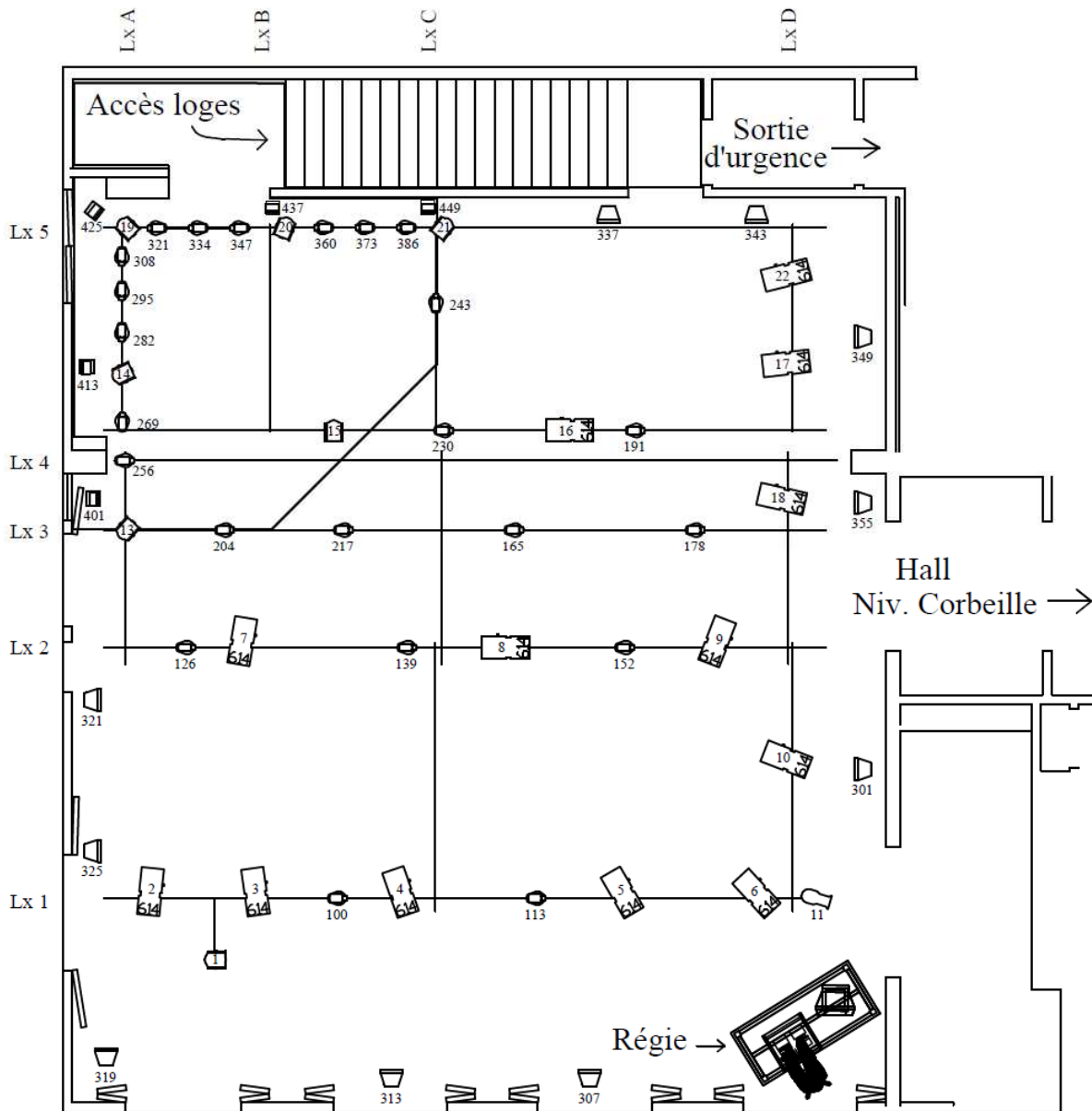
Parking

A public pay parking lot is located on the west side of the building.

PALAIS M()NTCALM

TECHNICAL INFORMATION

SALLE D'YOUVILLE



Legende		
Symbol	Name	Lamp
	RJ 614	BTR
	Fresnel 1Kw	BVT
	Leko 26 degree	EHF
	Genio Mobile	LED
	Color Blast	LED
	Colorado	LED

Palais Montcalm

Salle d'Youville - Corbeille level (1)

